

Tanner Park Recreation Center
South Bay, FL

Concept Narrative

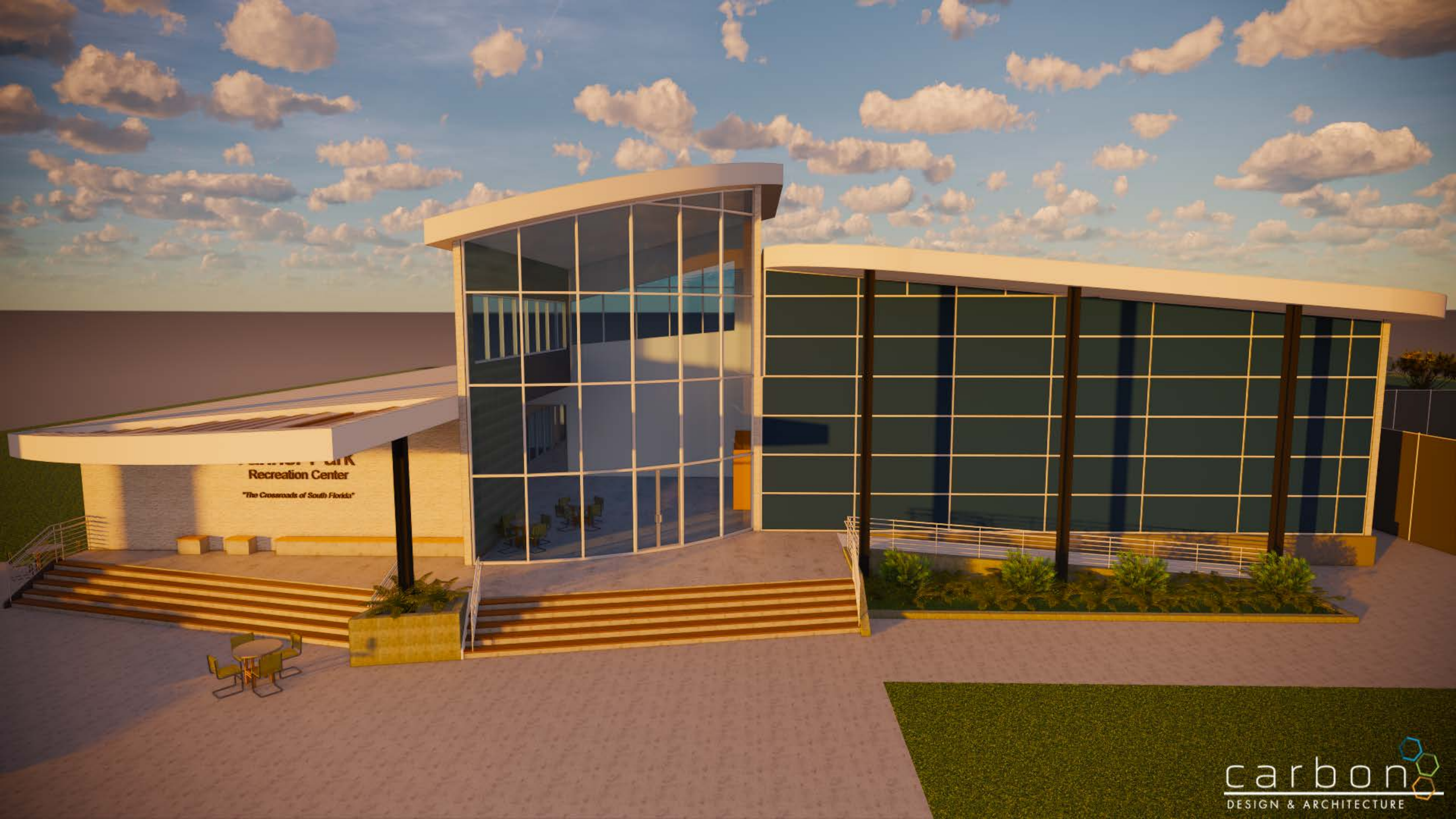
Concept 2 – Option 5

The new Tanner Park Recreation Center will serve a dual role as an innovative multipurpose facility as well as an Enhanced Hurricane Protection Area for the City of South Bay. When completed, this stately and preeminent building will establish a new visual landmark for the “Crossroads of South Florida” and become a great addition to the local community.

A key facet of the design is utilizing a curvilinear form at the building’s main entry tower and along the roof edges. This radiused structure assists with mitigating wind loads during severe weather events and provides a feature design element to the building. In addition to its aesthetic benefit, the curved formed portrays a welcoming appearance and enhances the buildings approachability. Also, along the exterior of the recreation center there are several canopies, overhangs, and lattices which provide shaded seating areas and comfortable resting places in numerous locations. These outdoor spaces interact positively with the interiors of building and create a dynamic synergy between them. Tanner Park users will have the ability to transition easily between the outside athletic fields and the various indoor recreation center amenities thus positively unifying the campus as a whole.

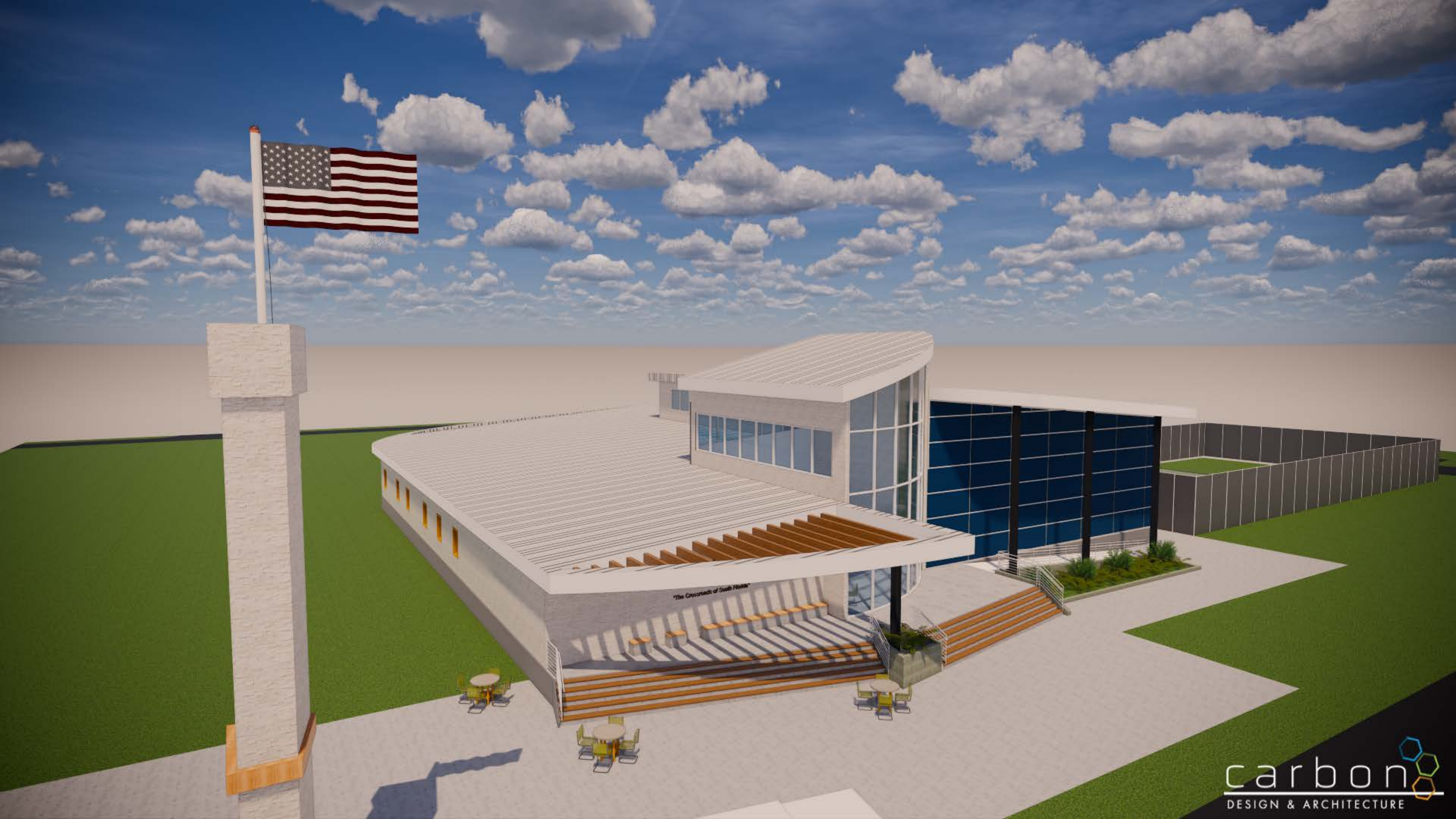


Tanner Park
Recreation Center
"The Crossroads of South Florida"

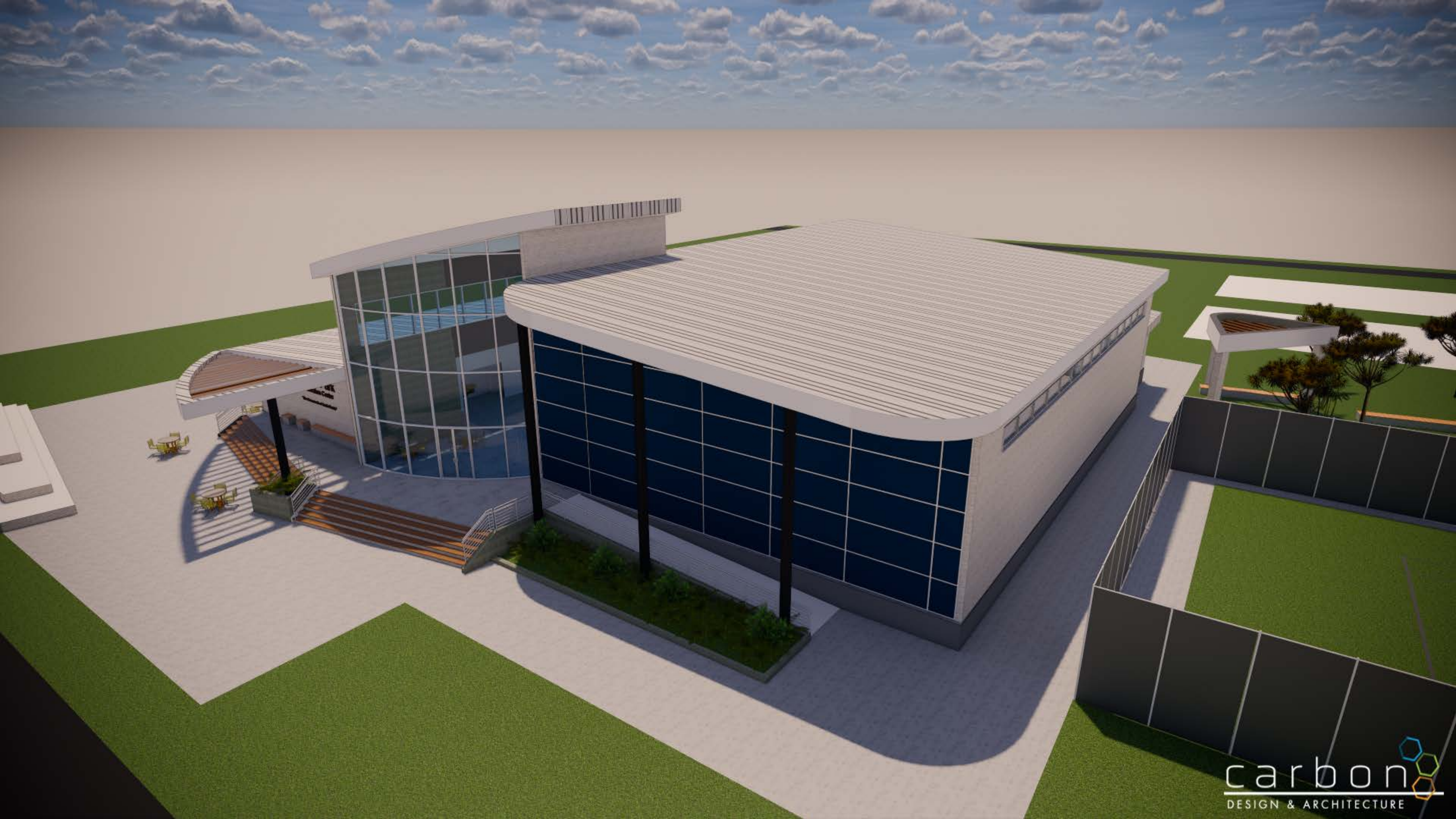


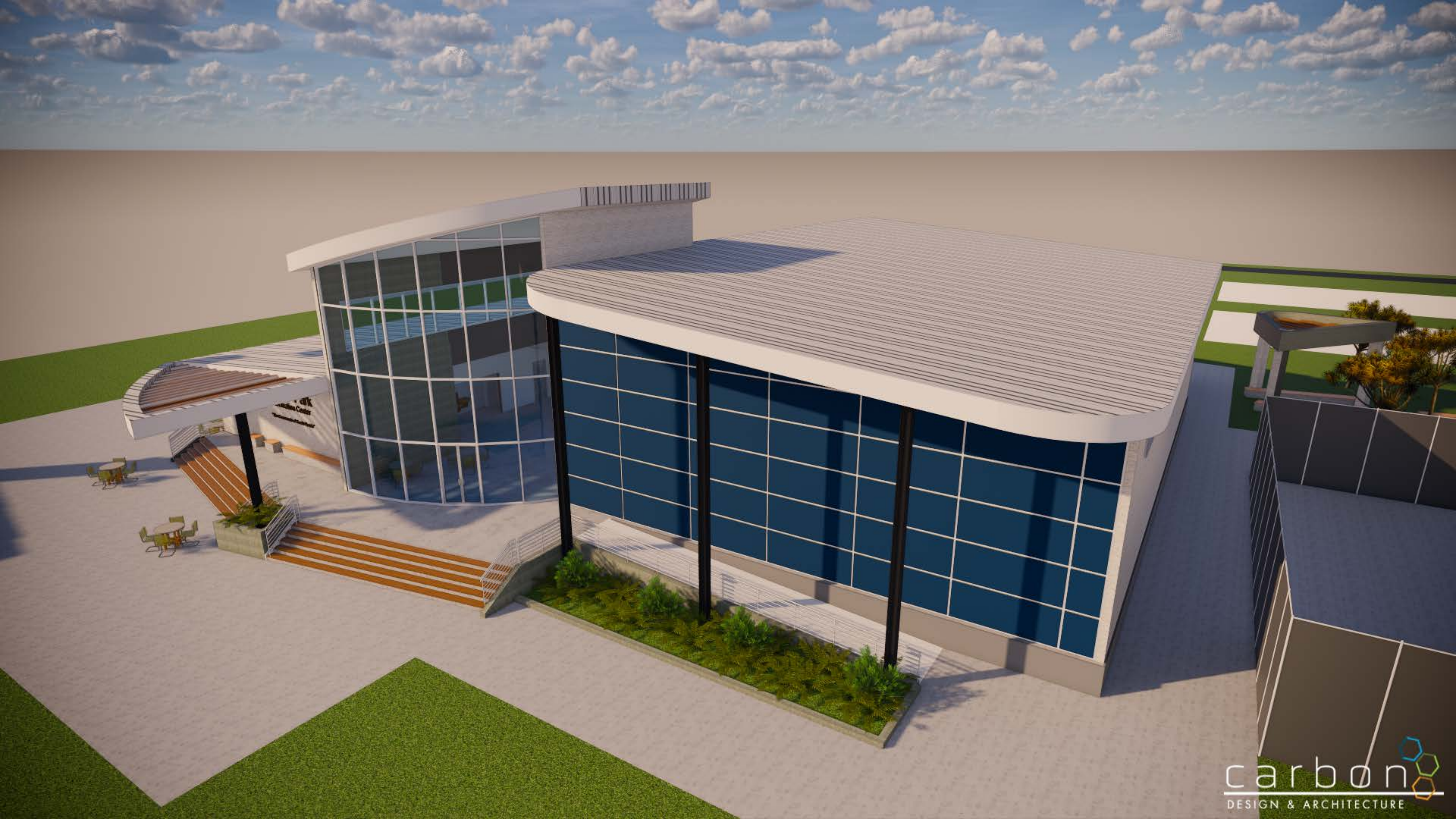
RECREATION CENTER
"The Crossroads of South Florida"

**Tanner Park
Recreation Center**
"The Crossroads of South Florida"



"The Crossroads of South Florida"





CFK
Center
Center





**Tanner Park
Recreation Center**
"The Crossroads of South Florida"