

HERBERT HOOVER DIKE

Rehabilitation Project

IMPLEMENTATION TIMELINE – 2022 Physical Completion

- Reach 1 Cutoff Wall Construction (2007-2013)
- Reach 1 Cutoff Wall Structure Tie-ins (Gap Closure) Construction (2016-2019)
- Reach 1 Cutoff Wall Extension Construction (2018-2022)
- Water Control Structure (Culvert) Construction (2011-2022)
- Dam Safety Modification Report (DSMR) was approved in August 2016
- DSMR construction contracts planned from 2019 through 2022
- State of Florida contributed \$100M to expedite HHD construction.



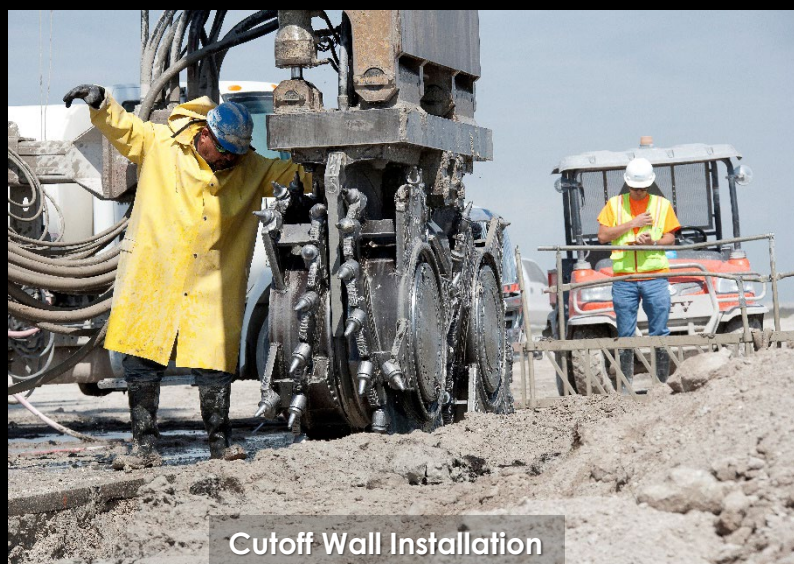
Structure S-281 (C-5A) Replacement



Structure S-275 (C-12) Replacement



Cutoff Wall Installation



Cutoff Wall Installation

	FY2017				FY2018				FY2019				FY2020				FY2021				FY2022				FY2023			
	Q1	Q2	Q3	Q4	Q1	Q2	Q3	Q4	Q1	Q2	Q3	Q4	Q1	Q2	Q3	Q4	Q1	Q2	Q3	Q4	Q1	Q2	Q3	Q4	Q1	Q2	Q3	Q4
Water Control Structures and Reach 1 Contracts	S-269 (C-11) & S-270 (C-16)	CONSTRUCTION																										
	S-279 (C-1A) & S-280 (C-1)	CONSTRUCTION																										
	S-267 (C-6)	CONSTRUCTION																										
	S-276 (C-4A) & S-277 (C-3)	CONSTRUCTION																										
	S-268 (C-8) & S-272 (C-13)	CONSTRUCTION																										
	Reach 1 Cutoff Wall Gap Closures	CONSTRUCTION																										
	S-291 (IP-3)	CONSTRUCTION																										
	S-281 (C-5A) & S-282 (C-5)	CONSTRUCTION																										
	S-286 (HP-3) & S-287 (HP-2)	CONSTRUCTION																										
	S-274 (C-12A) & S-278 (C-2)	CONSTRUCTION																										
	S-271 (C-10A)	CONSTRUCTION																										
	S-285 (HP-6)	Design	Procurement	CONSTRUCTION																								
	S-288 (HP-1)	Design	Procurement			CONSTRUCTION																						
	S-290 (IP-2) & S-292 (IP-1)	CONSTRUCTION																										
	S-265 (KI-2) & S-266 (KI-1)	Design	Procurement	CONSTRUCTION																								
S-284 (HP-5)	Design				Procurement				CONSTRUCTION																			
S-273 (C-10) & S-275 (C-12)	CONSTRUCTION																											
Reach 1 Cutoff Wall Extension	Design	Procurement	CONSTRUCTION																									
Cutoff Wall Task Order #1 (Lake Harbor)	Design (MATOC Base & TO #1)				Procurement				CONSTRUCTION																			
Cutoff Wall Task Order #2 (Clewiston)	Design				Procurement				CONSTRUCTION																			
Cutoff Wall Task Order #3 (Moore Haven)	Design				Procurement				CONSTRUCTION																			
Cutoff Wall Task Order #4 (Moore Haven)	Design				Procurement				CONSTRUCTION																			
Cutoff Wall Task Order #5 (Lakeport)	Design				Procurement				CONSTRUCTION																			
SR 78 Bridge & S-71 Embankment Armoring	Design				Procurement				CONSTRUCTION																			
S-72 Embankment Armoring	Design				Procurement				CONSTRUCTION																			
Lake Okeechobee System Operating Manual									LOSOM and NEPA (O&M Funded)																			

HHD FUNDING FOR 2022 PHYSICAL COMPLETION:

- FY2019 Allocation of \$162.4M and \$50M State of Florida contribution received for a total \$212.4M
- \$514M Supplemental Funding – Fully Funds HHD to Completion



HERBERT HOOVER DIKE | IMPLEMENTATION

Rehabilitation Project

COMPLETED WORK:

- 21.4 miles of cutoff wall construction in Reach 1
- Reach 1 Cutoff Wall Gap Closures contract
- 21 culvert replacements
- 4 culvert removal / abandonments

ONGOING WORK:

- 7 culvert replacements using 6 contracts
- 6.4 mile Reach 1 Cutoff Wall Extension contract
- 8.4 mile Cutoff Wall MATOC Task Order #1
- 7.0 mile Cutoff Wall MATOC Task Order #2
- 5.4 mile Cutoff Wall MATOC Task Order #3
- 3.7 mile Cutoff Wall MATOC Task Order #4
- 4.1 mile Cutoff Wall MATOC Task Order #5

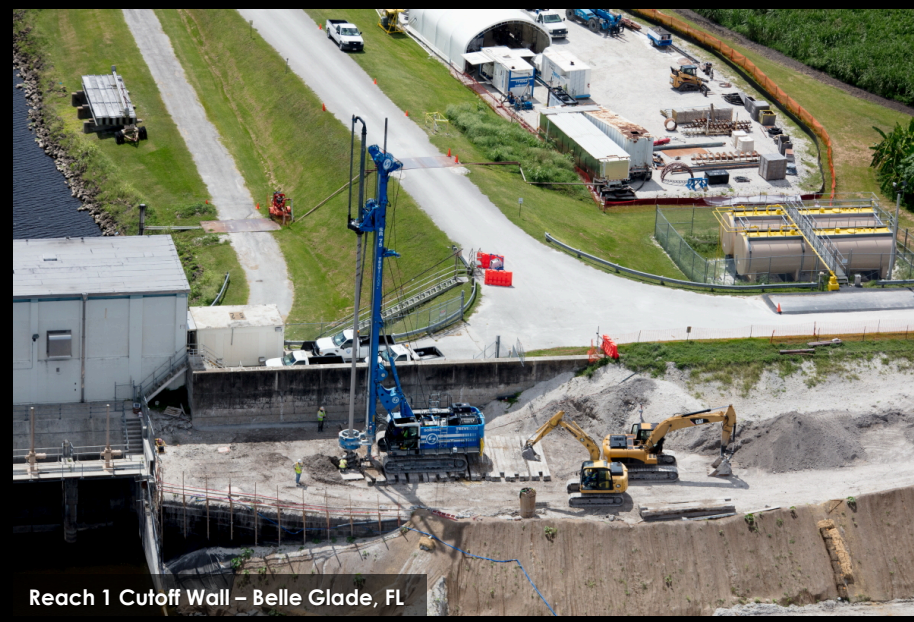
PLANNED WORK:

- SR-78 Bridge & S-71 Embankment Armoring
- S-72 Embankment Armoring

(MATOC = Multiple Award Task Order Contract)



Reach 1 Cutoff Wall – Pahokee, FL



Reach 1 Cutoff Wall – Belle Glade, FL



Structure S-278 (C-2)



Structure S-268 (C-8)



Structure S-292 (IP-1)

